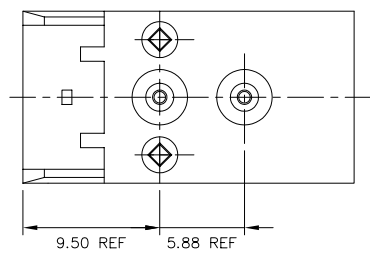
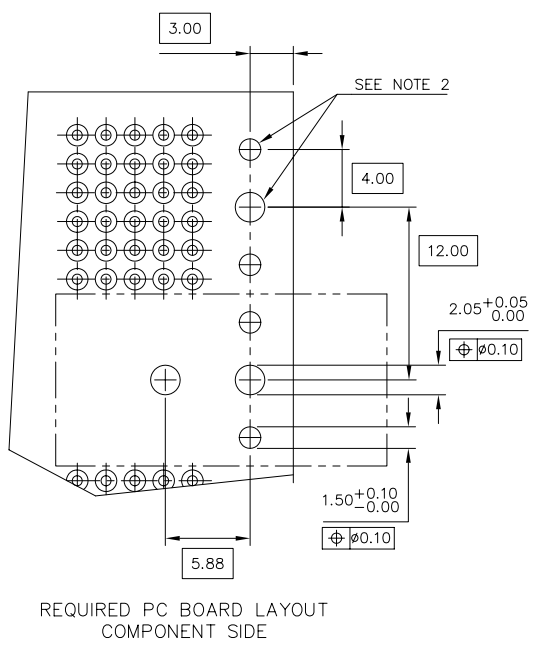
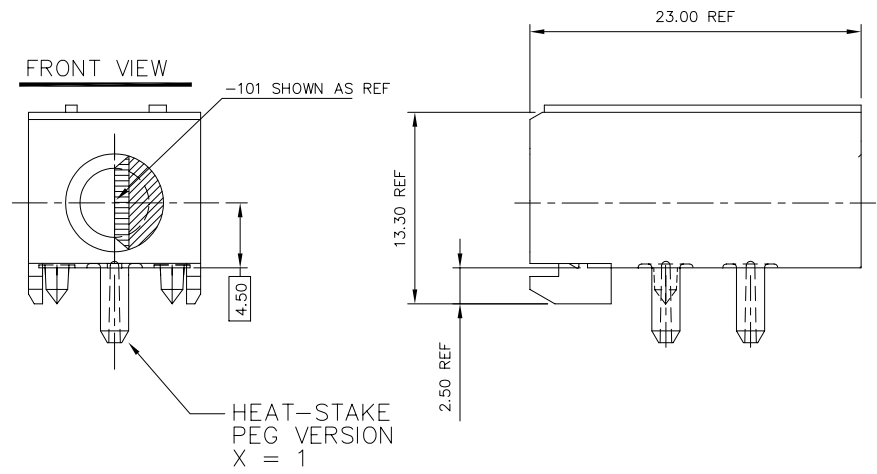


PRODUCT NO.	DESCRIPTION
63739-X0Z	HEAT STAKE VERSION

NOTE 5



NOTES:

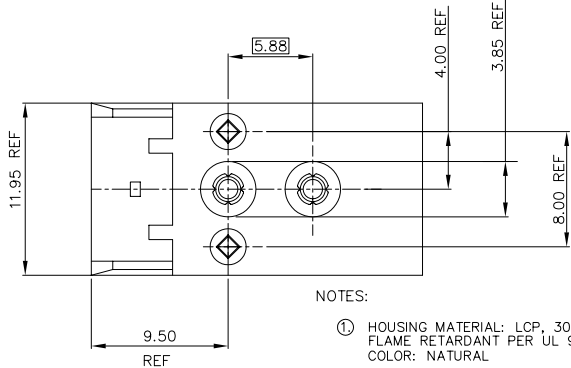
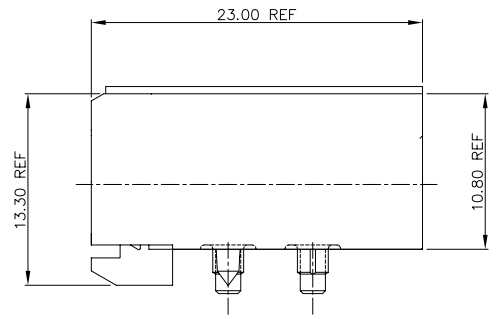
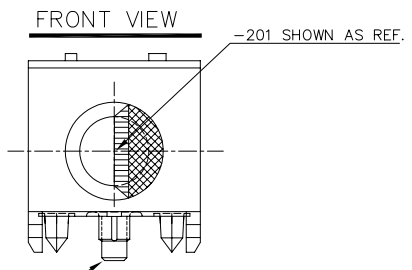
- ① HOUSING MATERIAL: LCP, 30% GLASS FILLED FLAME RETARDANT PER UL 94V-0. COLOR: NATURAL
- ② INDICATED HOLES ARE UNPLATED.
3. SEE SHEET 2 FOR PRESS-PEG VERSION. SEE SHEET 3 FOR SCREW-DOWN VERSION.
4. TO BE USED WITH P/N 63738.
- ⑤ ADD "LF" SUFFIX AT THE END OF PART NUMBER FOR LEAD FREE OPTION.
6. THIS PRODUCT MEETS EUROPEAN UNION DIRECTIVES AND OTHER COUNTRY REGULATION AS DESCRIBED IN GS-22-008.
7. THE HOUSING WILL WITHSTAND EXPOSURE TO 260°C PEAK TEMPERATURE FOR 15 SECONDS IN A WAVE SOLDER APPLICATION WITH A 1.5mm MINIMUM THICK CIRCUIT BOARD OR FOR 10-20 SECONDS IN A CONVECTION, INFRA-RED OR VAPOR PHASE REFLOW OVEN. SEE APPLICATION NOTES/PROCEDURES IF THEY ARE AVAILABLE.

mat'l. code		surface		tolerance		projection		product family	
-		ISO 1302 ✓		ISO 406 ISO 1101				METRAL (tm)	
ltr		ecn no		date		tolerances unless otherwise specified		title	
A	V90109	MDF	1/26/99	angles	linear	.0±.3 .00±.13 .000±.0051		RECEPTACLE KEY MODULE, 5 ROW	
B	V01599	JWS	7/13/00			MM		scale 1:1	
C	M06-0055	MHT	2/01/06	0'±2'				dwg no	
D	M06-0277	MHT	7/22/06	dr		M.FETROW 1/26/99		sheet 1 of 4 size	
				enrg		C.PENDLETON 1/26/99		63739	
				chr		C.PENDLETON 1/26/99		A3	
				appd		C.PENDLETON 1/26/99		type Product Customer Drawing	
sheet index		revision sheet		D					
		1							

Copyright FCI
 FCIconnect.com

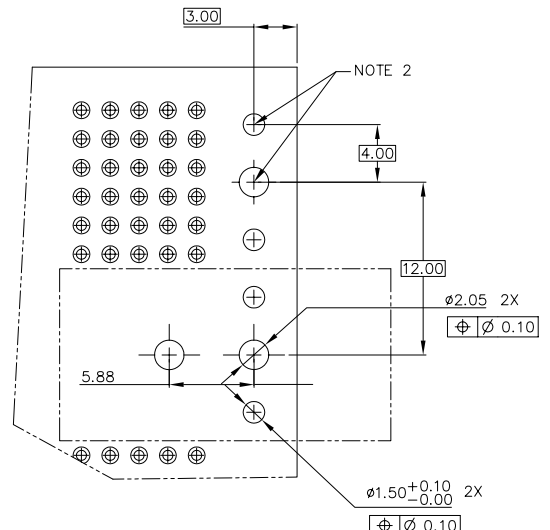
PRODUCT NO.	DESCRIPTION
63739-X0Z	PRESS-PEG VERSION

NOTE 5



- NOTES:
- HOUSING MATERIAL: LCP, 30% GLASS FILLED FLAME RETARDANT PER UL 94V-0. COLOR: NATURAL
 - INDICATED HOLES ARE UNPLATED.
 - THIS SHEET SHOWS DIMENSIONS OF OPTIONAL PRESS-PEG ONLY. FOR ALL OTHER DIMENSIONS AND REQUIREMENTS SEE SHEET 1. FOR HEAT-STAKE VERSION SEE SHEET 1, FOR SCREW-DOWN VERSION, SEE SHEET 3.
 - TO BE USED WITH P/N 63738.
 - ADD "Lf" SUFFIX AT THE END OF PART NUMBER FOR LEAD FREE OPTION.
 - THIS PRODUCT MEETS EUROPEAN UNION DIRECTIVES AND OTHER COUNTRY REGULATION AS DESCRIBED IN GS-22-008.

PRESS PEG VERSION
X = 2



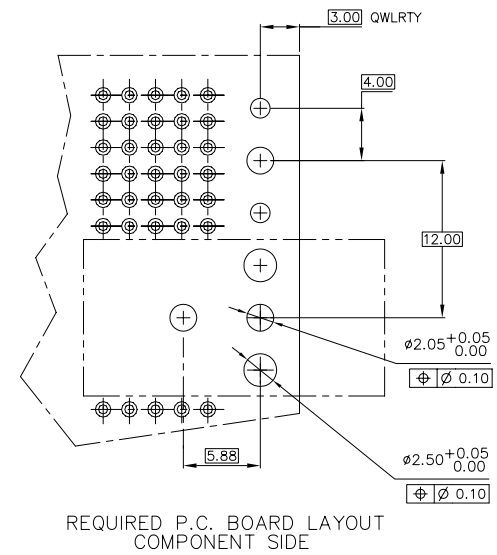
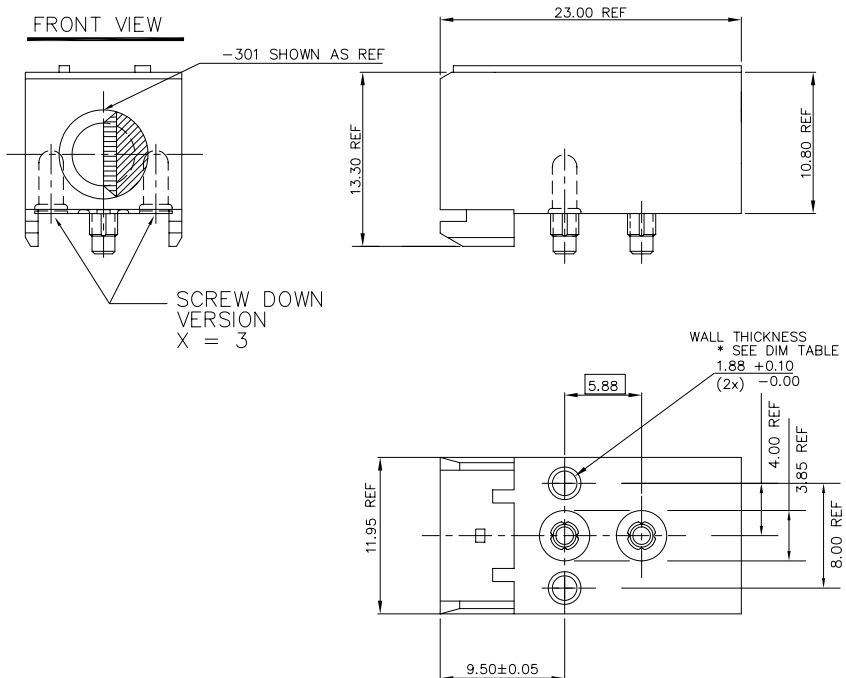
7. THE HOUSING WILL WITHSTAND EXPOSURE TO 260°C PEAK TEMPERATURE FOR 15 SECONDS IN A WAVE SOLDER APPLICATION WITH A 1.5mm MINIMUM THICK CIRCUIT BOARD OR FOR 10-20 SECONDS IN A CONVECTION, INFRA-RED OR VAPOR PHASE REFLOW OVEN. SEE APPLICATION NOTES/PROCEDURES IF THEY ARE AVAILABLE.

mat'l. code		surface		tolerance		projection		product family	
-		ISO 1302		ISO 406		MM		METRAL (tm)	
ltr		ecn no		date		tolerances unless otherwise specified		title	
D						.0±.3		RECEPTACLE KEY	
						.00±.13		MODULE, 5 ROW	
						.000±.0051		dwg no	
						scale 1:1		sheet 2 of 4 size	
				dr		M.FETROW 1/26/99		63739	
				enr		C.PENDLETON 1/26/99		A3	
				chr		C.PENDLETON 1/26/99		type	
				appd		C.PENDLETON 1/26/99		Product Customer Drawing	
sheet index		revision sheet							

Copyright FCJ
FCJconnect.com

PRODUCT NO.	DESCRIPTION
63739-X0Z	SCREW DOWN VERSION

NOTE 6



NOTES:

- ① HOUSING MATERIAL: LCP, 30% GLASS FILLED FLAME RETARDANT PER UL 94V-0. COLOR: NATURAL
2. THIS SHEET SHOWS DIMENSIONS OF OPTIONAL SCREW-DOWN ONLY. FOR ALL OTHER DIMENSIONS AND REQUIREMENTS SEE SHEET 1. FOR HEAT-STAKE VERSION SEE SHEET 1, FOR PRESS-PEG, SEE SHEET 2.
3. DIMENSIONS MARKED WITH AN * MAY DEVIATE AS SPECIFIED IN TABLE. ADVISE BERG ELECTRONICS WHEN DIMENSION IS BROUGHT INTO SPECIFIED TOLERANCE BY REPAIR OR REPLACEMENT.
4. MOUNTING SCREW TO BE #2-56 THREAD FORMING.
5. TO BE USED WITH P/N 63738.

- ⑥ ADD "LF" SUFFIX AT THE END OF PART NUMBER FOR LEAD FREE OPTION.
7. THIS PRODUCT MEETS EUROPEAN UNION DIRECTIVES AND OTHER COUNTRY REGULATION AS DESCRIBED IN GS-22-008.
8. THE HOUSING WILL WITHSTAND EXPOSURE TO 260°C PEAK TEMPERATURE FOR 15 SECONDS IN A WAVE SOLDER APPLICATION WITH A 1.5mm MINIMUM THICK CIRCUIT BOARD OR FOR 10-20 SECONDS IN A CONVECTION, INFRA-RED OR VAPOR PHASE REFLOW OVEN. SEE APPLICATION NOTES/PROCEDURES IF THEY ARE AVAILABLE.

mat'l. code		surface		tolerance		projection		product family	
-		ISO 1302 ✓		ISO 406		⊕		METRAL (tm)	
ltr		ecn		no		dr		date	
D								tolerances unless otherwise specified	
								.0±.3	
								.00±.13	
								.000±.0051	
								scale 1:1	
								MM	
								title	
								RECEPTACLE KEY MODULE, 5 ROW	
								dwg no	
								63739	
								sheet 3 of 4 size	
								A3	
								type	
								Product Customer Drawing	
sheet index		revision sheet							



Copyright FCI

PRODUCT NO 63739-X0Z

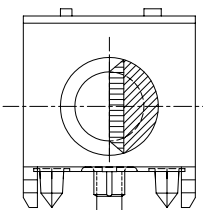
X = -1 (SHEET 1)

X = -2 (SHEET 2)

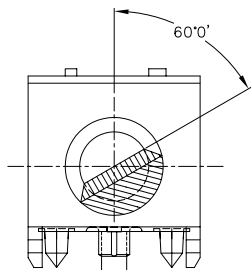
X = -3 (SHEET 3)

Z = 1 THRU 6 AS
SHOWN AT LEFT

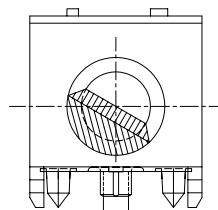
FRONT VIEW



-X01

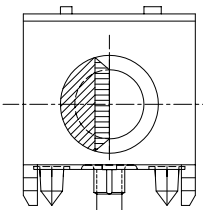


-X02

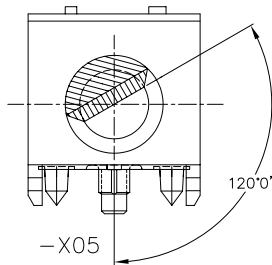


-X03

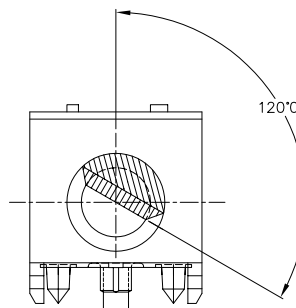
X = -2 SHOWN HERE



-X04



-X05



-X06



FCJconnect.com

Copyright FCJ

mat'l. code		surface		tolerance		projection		product family	
-		ISO 1302		ISO 406		ISO 1101		METRAL (tm)	
ltr		ecn no		date		tolerances unless otherwise specified		title	
D						.0±.3		RECEPTACLE KEY MODULE, 5 ROW	
				angles		linear			
				0°±2'		.00±.13			
						.000±.0051		scale 1:1	
				dr		M.FETROW 1/26/99		dwg no	
				enr		C.PENDLETON 1/26/99		sheet 4 of 4 size	
				chr		C.PENDLETON 1/26/99		63739 A3	
				appd		C.PENDLETON 1/26/99		type Product Customer Drawing	
sheet index		revision sheet							